

EFF Assessment Task

Finding Stores

Characteristics of this Assessment Task

Action (Performance Goal)

Read shopping list items and brand names, and match the words to the same words on signs and symbols, in order to identify places to shop

Text Type

Short, high-interest, non-continuous text and pictures (Shopping list; Store signs and symbols)

Content

Everyday, simple (mostly 1-and 2- syllables) vocabulary related to shopping needs

Environment

Familiar, comfortable setting, such as the classroom

Estimated time to complete task

15 minutes

Materials:

A shopping list containing 10 items – labeled “Figure 1”

Worksheet containing items on shopping list and drawings of stores at which shopping items can be purchased –labeled “Answer Sheet 1”

Assessor Observation Form

Knowledge and strategies that are the focus of this assessment task

(proficient performance on this task will require fluent and independent use of the following knowledge and strategies)

- Recognizing new letter/sound relationships, some syllables, and new words or word groups (2-3 word items) in simple non-continuous text, by isolating and saying first/last sounds, naming pictures to isolate and say initial consonants, sounding out words by segmenting words into separate sounds/ syllables, combining or blending sounds, recognizing simple rhyming word patterns, using oral vocabulary, and memorizing sight words
- Familiarity with common knowledge, alphabet (upper/lower case letters, consonants and vowels), and predictable letter/sound relationships (individual consonants and vowels, digraphs and blends)
- Monitoring retention of letter/sound and word recognition by use of such strategies as rereading or making word lists
- Recalling prior knowledge of topic to assist in understanding

Additional knowledge and strategies that may affect performance on this task

Familiarity with shopping and places to shop

Evidence of learner performance that will be collected using this assessment task

Observations

1. Assessor observations (on Assessor Observation Form) of oral reading

Work Products

1. Worksheet with appropriate stores at which to shop for items circled

Step-by-step procedures for administration

The oral reading of the shopping list aloud will be administered to an individual learner. The oral reading will be audiotaped. The completion of the worksheet identifying places to purchase items can be administered to an individual learner or to a group. While there is no time limit to complete this task, it should require no more than 15 minutes to complete. You may repeat any of the steps as needed, but repetition must be in English and you must read the steps exactly as they are written in the scripts. You may also model any requirement of the task to help clarify, as needed.

Step 1. Pass out copies of the shopping list (Figure 1) to the learners.

Step 2. Explain the task requirements/expectations to the Learner:

For this task, you will read about shopping and places to shop. Please look at the shopping list. In a moment, I will ask you to read this list aloud. I will tape you as you read.

Are there any questions?

Step 3. The Learner is asked to read the ten-word shopping list aloud:

Please read these words to me out loud. I am turning on the tape recorder now.

Turn on the tape recorder. The Learner reads aloud. (The directions, *Read these words out loud*, are also printed at the top of the list to assist the ESL student who has lower level listening skills.)

Note details of the Learner's performance on the Assessor Observation Form. Turn off tape recorder when learner is finished.

Step 4. Pass out copies of Answer Sheet 1. Ask the learner to identify the stores at which the items on the list can be purchased.

The answer sheet has pictures of stores where you can buy the items on your shopping list. Each word has pictures of three different stores underneath it. You will circle the store where you can buy the item listed. Read the words listed here. For each word, circle the picture of the store where you would buy it.

Do you have any questions?

If there are no questions, allow Learner(s) time to complete the worksheet. Observe the Learner's progress, noting observations on the Assessor Observation Form.

Step 5. Collect all task materials and record approximate time taken by each student to complete the task.

Scoring Rubric for Reading a Shopping List and Identifying Places to Shop (Level 1)

Date:

Student Name:

Unable to Score	Beginning	Proficient	Advanced
	<ul style="list-style-type: none"> • Reads 8 or fewer of the words on the shopping list accurately; Reads with much hesitation • Answers 5 or fewer of questions 1, 2, 3, 4, 6, 9, or 10 correctly on Answer Sheet 1 • May demonstrate difficulty in using prior knowledge to assist in the completion of the task; answers 1 or fewer of questions 5, 7, or 8 correctly on Answer Sheet 1 • May need repeated attempts to complete task; requires significant direction and support 	<ul style="list-style-type: none"> • Reads the 9 of the words on the shopping list accurately, using strategies such as sounding out segments, recognizing patterns, or drawing on oral vocabulary and/or sight word knowledge; reads some of the words with hesitation and other words without hesitation • Answers 6 of questions 1, 2, 3, 4, 6, 9, or 10 correctly on Answer Sheet 1 • Demonstrates some use of prior knowledge to assist in the completion of the task; answers 2 of questions 5, 7, or 8 correctly on Answer Sheet 1 • Needs minimal amount of direction and support to complete task 	<ul style="list-style-type: none"> • Reads all of the words on the shopping list accurately; reads without hesitation • Answers all of questions 1, 2, 3, 4, 6, 9, or 10 correctly on Answer Sheet 1 • Clearly demonstrates use of prior knowledge to assist in completion of the task; answers all 3 questions 5, 7, and 8 correctly on Answer Sheet 1 • Completes task without direction or support

Figure 1.

Shopping List

Directions: Read the words on the shopping list out loud.

1. stamps
2. Tylenol
3. hamburger
4. cold medicine
5. camera
6. shoes
7. shampoo
8. money order
9. gas
10. hammer

Places to Shop

Directions: Read the words listed here. For each word, circle the picture of the store where you would buy it.

1. stamps



Brown's Gas Station
Regular Gas \$1.58 gal.



U.S. Post Office
Buy your holiday stamps now



Hamburger Stand
Regular hamburger \$0.59

2. Tylenol



Thrifty Pharmacy
Tylenol \$3.99



Hamburger Stand
Regular hamburger \$0.59



Brown's Gas Station
Regular Gas \$1.58 gal.

3. hamburger



U.S. Post Office
Buy your holiday stamps now



Hardware Store
All hammers and saws on sale



Hamburger Stand
Regular hamburger \$0.59

4. cold medicine



Hamburger Stand
Regular hamburger \$0.59



Thrifty Pharmacy
Thrifty Cold Medicine \$5.99



U.S. Post Office
Buy your holiday stamps now

5. camera



Department Store
Men's shoe sale starts today



Hamburger Stand
Regular hamburger \$0.59



U.S. Post Office
Buy your holiday stamps now

6. shoes



Brown's Gas Station
Regular Gas \$1.58 gal.



Hardware Store
All hammers and saws on sale



Department Store
Men's shoe sale starts today

7. shampoo



Thrifty Pharmacy
Tylenol \$3.99



U.S. Post Office
Buy your holiday stamps now



Hardware Store
All hammers and saws on sale

8. money order



Department Store
Men's shoe sale starts today



Hardware Store
All hammers and saws on sale



U.S. Post Office
Buy your holiday stamps now

9. gas



Ace Hardware Store
All hammers and saws on sale



Brown's Gas Station
Regular Gas \$1.58 gal.



Thrifty Pharmacy
Tylenol \$3.99

10. hammer



Ace Hardware Store
All hammers and saws on sale



Hamburger Stand
Regular hamburger \$0.59



U.S. Post Office
Buy your holiday stamps now

Places to Shop – Assessor Observation Form

Date: _____

Learner: _____

As the Learner reads each word on the shopping list out loud, note details of his or her performance below:

Word	Read correctly?	With hesitation?	Comments/strategies used
1. stamps	Yes No	Yes No	
2. Tylenol	Yes No	Yes No	
3. hamburger	Yes No	Yes No	
4. cold medicine	Yes No	Yes No	
5. camera	Yes No	Yes No	
6. shoes	Yes No	Yes No	
7. shampoo	Yes No	Yes No	
8. money order	Yes No	Yes No	
9. gas	Yes No	Yes No	
10. hammer	Yes No	Yes No	

As the Learner completes the worksheet, take note of the following:

Did the Learner correctly identify the store at which each item may be purchased? Yes No

Note any missed items:

Did the Learner require assistance to complete task? Yes No

Did the Learner appear to be frustrated by the task? Yes No

Did the Learner complete the task within 15 minutes? Yes No

If not, how much time did the Learner require?

Other notes/comments:

Answer Key for Answer Sheet 1.

Places to Shop

Students are expected to circle the correct store. The correct answers are highlighted here.

1. stamps



Brown's Gas Station
Regular Gas \$1.58 gal.



U.S. Post Office
Buy your holiday stamps now



Hamburger Stand
Regular hamburger \$0.59

2. Tylenol



Thrifty Pharmacy
Tylenol \$3.99



Hamburger Stand
Regular hamburger \$0.59



Brown's Gas Station
Regular Gas \$1.58 gal.

3. hamburger



U.S. Post Office
Buy your holiday stamps now



Hardware Store
All hammers and saws on sale



Hamburger Stand
Regular hamburger \$0.59

4. cold medicine



Hamburger Stand
Regular hamburger \$0.59



Thrifty Pharmacy
Thrifty Cold Medicine \$5.99



U.S. Post Office
Buy your holiday stamps now

5. camera



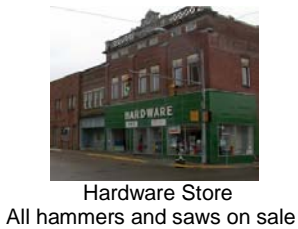
6. shoes



7. shampoo



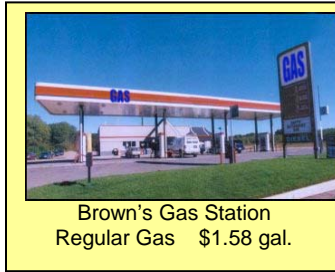
8. money order



9. gas



Ace Hardware Store
All hammers and saws on sale



Brown's Gas Station
Regular Gas \$1.58 gal.



Thrifty Pharmacy
Tylenol \$3.99

10. hammer



Hardware Store
All hammers and saws on sale



Hamburger Stand
Regular hamburger \$0.59



U.S. Post Office
Buy your holiday stamps now

